



City of Westminster

# LOW TAX SAFER STREETS BETTER SERVICES

**DELIVERING** for you

**Your guide to council tax**

2025/2026

# Contents

Council funding	3
Council tax rates	4-5
How to pay	6
Support and advice	7
Get Involved	8



You can contact us if you need information or have any problems with anything to do with Council Tax.

☎ 0343 178 2743

✉ westminstercounciltax1@secure.capita.co.uk

✉ Westminster City Council  
Council Tax, P.O. Box 165  
Erith, DA8 9DW

If you would like a copy of this document in Braille, large print or another language:

☎ 020 7641 6000

For the latest news from Westminster City Council, visit

🌐 [www.westminster.gov.uk](http://www.westminster.gov.uk)

📱 @CityWestminster

Sign up to receive our e-newsletters:

🌐 [westminster.gov.uk/newsletters](http://westminster.gov.uk/newsletters)



For more information, please visit:  
[westminster.gov.uk/council-tax](http://westminster.gov.uk/council-tax)

# From the Leader

We're working hard to build a Fairer Westminster for all residents.

This year our priority is keeping you safe and bringing our services closer to you than ever before.

With prudent financial management, we are keeping costs down and services effective.

Even with a modest increase, amounting to 48p per week in the Westminster portion, your Council Tax remains one of the lowest in the country.

Your contribution funds the delivery of high-quality services like weekly bin collections and new Community Hubs, as well as ensuring the care of vulnerable adults.

We're investing more than ever before in tackling anti-social behaviour around the borough.

You've told us it affects your daily lives – which is why we will double the number of CCTV cameras from 100 to 200. Eight additional City Inspectors will be employed to solely focus on making our streets safer.

We're also increasing funding for social care payments, help with the cost of living, and to support rough sleepers off our streets.

With your continued support, we can build a safer, stronger, and more responsive Westminster that works for you.

**Cllr Adam Hug**

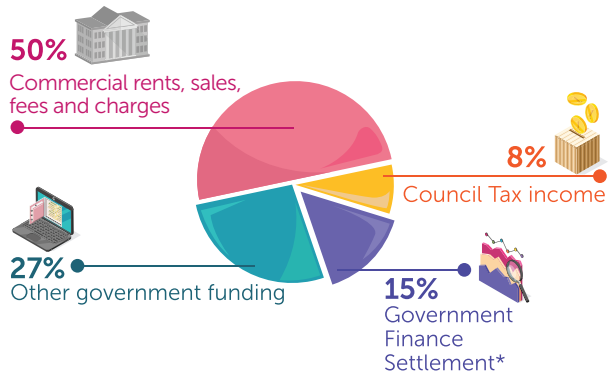
Leader of Westminster City Council



# Where our funding comes from

For the period from April 2025 to March 2026, the council has a gross budget of £900m, called the General Fund, used to deliver all services, other than social housing which is accounted for in a separate Housing Revenue Account (HRA). The 30 year HRA plan provides investment of £2.493bn to deliver new homes, improve housing quality, refurbish existing housing stock condition, improve safety, and support tenants. In addition to this, we also have a Capital Strategy, investing in public realm, highways and communities, helping us plan for the future and manage our finances effectively.

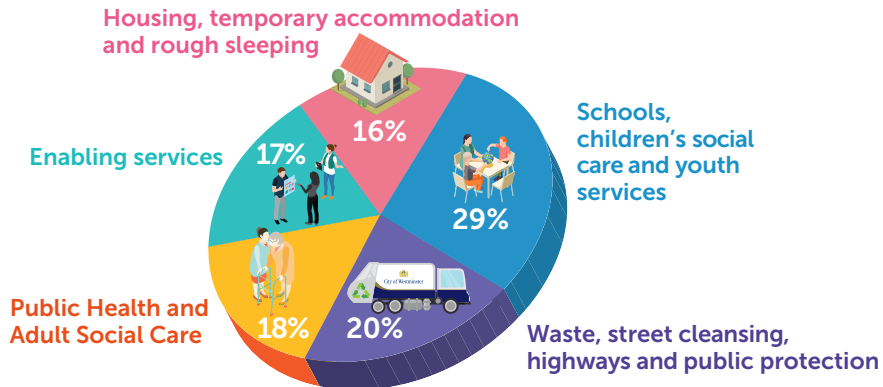
Here is a current breakdown of how our budget is split:



\* Includes Retained Business Rates. The council retains 5% of all Business Rates collected as part of the Government Finance Settlement.

# How we invest in our services

All money raised is invested in Council services across Westminster (excluding social housing, which has its own ring-fenced fund, funded by rents from leaseholders and tenants). Here is a breakdown:



**The GLA Precept:** A proportion of your council tax goes towards funding services provided by the Greater London Authority. This includes London-wide transport, policing and fire services. The budget for this is set each year by the Mayor of London and is automatically included in the amount of council tax you pay.

# How much council tax will I pay for 2025/26?

You can find out how much council tax you will pay each year by finding out the valuation band of your property. This is based on how much your property was worth in 1991.

## The valuation rates are:

Band	Valuation rates
A	Up to £40,000
B	£40,001 to £52,000
C	£52,001 to £68,000
D	£68,001 to £88,000
E	£88,001 to £120,000
F	£120,001 to £160,000
G	£160,001 to £320,000
H	More than £320,000



The band of your property is also shown on the bill we send to you, just below where it says: 'Council tax demand'.

**By looking up your band on the table below, you will see your total council tax payment for the year:**

Band	WCC (£)	GLA precept (£)	Total (£)
A	351.20	326.92	678.12
B	409.73	381.41	791.14
C	468.27	435.89	904.16
D	526.80	490.38	1017.18
E	643.87	599.35	1243.22
F	760.93	708.33	1469.26
G	878.00	817.30	1695.30
H	1,053.60	980.76	2034.36

**If you live in Queen's Park, an additional precept is applied for the Queen's Park Community Council, created in April 2014:**

Band	WCC (£)	GLA precept (£)	QP precept (£)	Total (£)
A	351.20	326.92	34.87	712.99
B	409.73	381.41	40.69	831.83
C	468.27	435.89	46.50	950.66
D	526.80	490.38	52.31	1,069.49
E	643.87	599.35	63.93	1,307.15
F	760.93	708.33	75.56	1,544.82
G	878.00	817.30	87.18	1,782.48
H	1,053.60	980.76	104.62	2,138.98

**If you live in Montpelier Square, an additional precept is applied:**

Band	WCC (£)	GLA precept (£)	MP precept (£)	Total (£)
A	351.20	326.92	408.81	1,086.93
B	409.73	381.41	476.94	1,268.08
C	468.27	435.89	545.08	1,449.24
D	526.80	490.38	613.21	1,630.39
E	643.87	599.35	749.48	1,992.70
F	760.93	708.33	885.75	2,355.01
G	878.00	817.30	1,022.02	2,717.32
H	1,053.60	980.76	1,226.42	3,260.78



# How to pay your council tax

## By Direct Debit/ebilling

Setting up a Direct Debit can be a convenient way to pay your council tax bill. Please use the QR code to set one up and you'll also be eligible to receive your bill electronically too.



Go to [westminster.gov.uk/council-tax/pay-your-council-tax](https://westminster.gov.uk/council-tax/pay-your-council-tax) to find the links to set up your ebilling/Direct Debit payments.

## By telephone

Alternatively, you can pay by debit or credit card by using our 24-hour automated payment line:

**020 3772 2602**

You'll need your 9-digit account number which can be found on your council tax bill.



## In person

You can also pay by cash, cheque or debit card at any bank, or at any post office branch in the Westminster area. All cheques should be made payable to 'Westminster City Council'.

# Support with paying your council tax

We understand many residents might need support with paying their council tax. Some people or properties are eligible for discounts or could be exempt from paying. Contact the Council Tax Service if you have financial difficulties affecting your ability to pay.

You can find information about discounts and exemptions here

 [westminster.gov.uk/council-tax/apply-council-tax-discounts-and-exemptions](https://westminster.gov.uk/council-tax/apply-council-tax-discounts-and-exemptions)

For details about Housing Benefit and Council Tax Support visit

 [westminster.gov.uk/council-tax/housing-benefit-and-council-tax-support](https://westminster.gov.uk/council-tax/housing-benefit-and-council-tax-support)

To extend your instalment plan, you can complete a Payment Arrangement Request form here

 [westminster.gov.uk/council-tax/more-information-about-council-tax](https://westminster.gov.uk/council-tax/more-information-about-council-tax)



# Support with the cost of living

We encourage all residents to visit the cost of living support hub on our website

 [www.westminster.gov.uk/cost-of-living-support](http://www.westminster.gov.uk/cost-of-living-support)

to find out about more support you could be entitled to. The hub includes:



Advice on tackling debt, such as contacting debt agencies who can evaluate your situation and give you bespoke advice



Support with rising utility bills, from how to talk to your supplier to information on how to access the Home Energy Advice Service



Ways to find further financial advice that relates to your specific needs




Our Report-It tool provides an easy-to-use system for letting us know about issues in your area. From reporting issues like waste or street cleaning, to noise or illegally parked vehicles, you can let us know what needs to be dealt with in your neighbourhood, in just three steps.

Let us know about the issues affecting you:

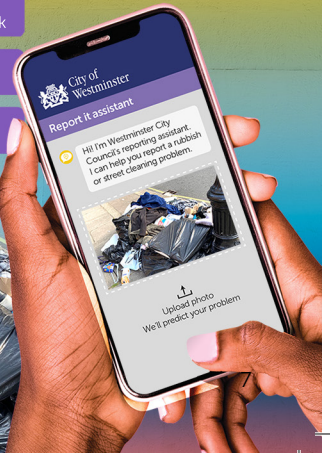
 [www.westminster.gov.uk/report-it](http://www.westminster.gov.uk/report-it)

## Report it

**Step 1:** Visit  
 [report-it-assistant.westminster.gov.uk](http://report-it-assistant.westminster.gov.uk)

**Step 2:**  
Upload a photo of the problem

**Step 3:**  
Confirm the location and you're done



# Get involved with your council

There are many ways to help us build a Fairer Council and make sure your voice is heard. Here are just some of the ways you can get involved:

Find out who your elected representatives are and when they meet to make decisions:

 [westminster.moderngov.co.uk](http://westminster.moderngov.co.uk)

Sign up to receive our email newsletters:

 [www.westminster.gov.uk/newsletters](http://www.westminster.gov.uk/newsletters)

Read and respond to consultations or proposals:

 [www.westminster.gov.uk/consultations](http://www.westminster.gov.uk/consultations)

Join your local amenity society to contribute to planning decisions in your area:

 [www.westminsteramenitysocietiesforum.org](http://www.westminsteramenitysocietiesforum.org)

Join our Youth Council:

 [www.westminster.gov.uk/about-council/youth-council](http://www.westminster.gov.uk/about-council/youth-council)

Join our Resident Research Panel to review and feedback on our policies and projects:

 [www.westminster.gov.uk/resident-research-panel](http://www.westminster.gov.uk/resident-research-panel)

