

**General Notes:**  
 Drawing to be read in conjunction with the contract documents.  
 Do not scale from this drawing.  
 Contractor to check all dimensions on site. All dimensions to be achieved if any conditions immediately.

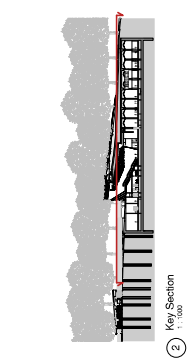
**Lead Architect:**  
**Alliave Architects**  
 252/21 03 Westbourne Rd,  
 London NW10 7UN, UK  
 Phone: +44 (0)20 7254 6140  
 email: info@alliave.com

**Memorial Architect:**  
**Reynard Architects**  
 10000  
 London NW10 7UN, UK  
 Phone: +44 (0)20 7254 6140  
 email: info@reynard.com

**Landscape Architect:**  
**Qualitative Partner + Bowman**  
 Porter +  
 1 Colman Way, UK  
 Phone: +44 (0)20 7254 6950  
 email: info@qualitative.com

**WSP House**  
 70 Church Lane,  
 London NW10 7UN, UK  
 Phone: +44 (0)20 7214 5000  
 email: info@wsp.com

15/11/24 - Revision 02/24/24  
 15/11/24 - Revision 02/24/24



- 1 Proposed Ground - Part Section**  
 1:250
- 1. Main entrance
  - 2. Car park
  - 3. Memorial
  - 4. Memorial
  - 5. Memorial
  - 6. Memorial
  - 7. Memorial
  - 8. Memorial
  - 9. Memorial
  - 10. Memorial
  - 11. Memorial
  - 12. Memorial
  - 13. Memorial
  - 14. Memorial
  - 15. Memorial
  - 16. Memorial
  - 17. Memorial
  - 18. Memorial
  - 19. Memorial
  - 20. Memorial
  - 21. Memorial
  - 22. Memorial
  - 23. Memorial
  - 24. Memorial
  - 25. Memorial
  - 26. Memorial
  - 27. Memorial
  - 28. Memorial
  - 29. Memorial
  - 30. Memorial
  - 31. Memorial
  - 32. Memorial
  - 33. Memorial
  - 34. Memorial
  - 35. Memorial
  - 36. Memorial
  - 37. Memorial
  - 38. Memorial
  - 39. Memorial
  - 40. Memorial
  - 41. Memorial
  - 42. Memorial
  - 43. Memorial
  - 44. Memorial
  - 45. Memorial
  - 46. Memorial
  - 47. Memorial
  - 48. Memorial
  - 49. Memorial
  - 50. Memorial
  - 51. Memorial
  - 52. Memorial
  - 53. Memorial
  - 54. Memorial
  - 55. Memorial
  - 56. Memorial
  - 57. Memorial
  - 58. Memorial
  - 59. Memorial
  - 60. Memorial
  - 61. Memorial
  - 62. Memorial
  - 63. Memorial
  - 64. Memorial
  - 65. Memorial
  - 66. Memorial
  - 67. Memorial
  - 68. Memorial
  - 69. Memorial
  - 70. Memorial
  - 71. Memorial
  - 72. Memorial
  - 73. Memorial
  - 74. Memorial
  - 75. Memorial
  - 76. Memorial
  - 77. Memorial
  - 78. Memorial
  - 79. Memorial
  - 80. Memorial
  - 81. Memorial
  - 82. Memorial
  - 83. Memorial
  - 84. Memorial
  - 85. Memorial
  - 86. Memorial
  - 87. Memorial
  - 88. Memorial
  - 89. Memorial
  - 90. Memorial
  - 91. Memorial
  - 92. Memorial
  - 93. Memorial
  - 94. Memorial
  - 95. Memorial
  - 96. Memorial
  - 97. Memorial
  - 98. Memorial
  - 99. Memorial
  - 100. Memorial

**Client:** United Kingdom - National Holocaust Memorial Foundation  
**Project:** National Holocaust Memorial  
**Phase:** Planning Submission  
**Date:** 15/11/24

**Project Information:**  
 PC2 15/11/27 Planning Submission  
 PC2 15/11/28 Quality & Sustainability  
 PC2 15/11/29 Construction Management  
 PC1 15/11/16 Issue for Planning

**Project Information:**  
 PC2 15/11/27 Planning Submission  
 PC2 15/11/28 Quality & Sustainability  
 PC2 15/11/29 Construction Management  
 PC1 15/11/16 Issue for Planning

**Project Information:**  
 PC2 15/11/27 Planning Submission  
 PC2 15/11/28 Quality & Sustainability  
 PC2 15/11/29 Construction Management  
 PC1 15/11/16 Issue for Planning