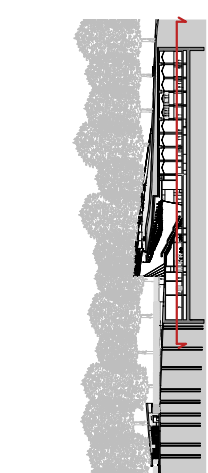


General Notes:
 Drawings to be read in conjunction with the specification and all relevant drawings.
 Do not scale from this drawing.
 Occurrences to be checked on site, Adjaye Associates to be notified immediately if any discrepancy between this drawing and site conditions immediately.



2 Key Section
 1:100

Lead Architect:
Adjaye Associates
 229-231 Old Marlborough Rd,
 London NW1 6SS, UK
 Phone +44 (0)20 7258 6140
 email: info@adjaye.com

Memorial Architect:
Ron Arad Associates
 62 Chalk Farm Road,
 London NW1 6SS, UK
 Phone +44 (0)20 7284 4853
 email: info@arad.com

Landscape Architect:
Gustafson Porter + Bowman
 1 Chelsea Mews,
 London NW1 6SS, UK
 Phone +44 (0)20 7258 6140
 email: enquiries@gb-b.com

WSP
 WSP House
 75 Gower Street
 London WC2A 3RF, UK
 Phone +44 (0) 20 7314 5000,
 www.wsp.com

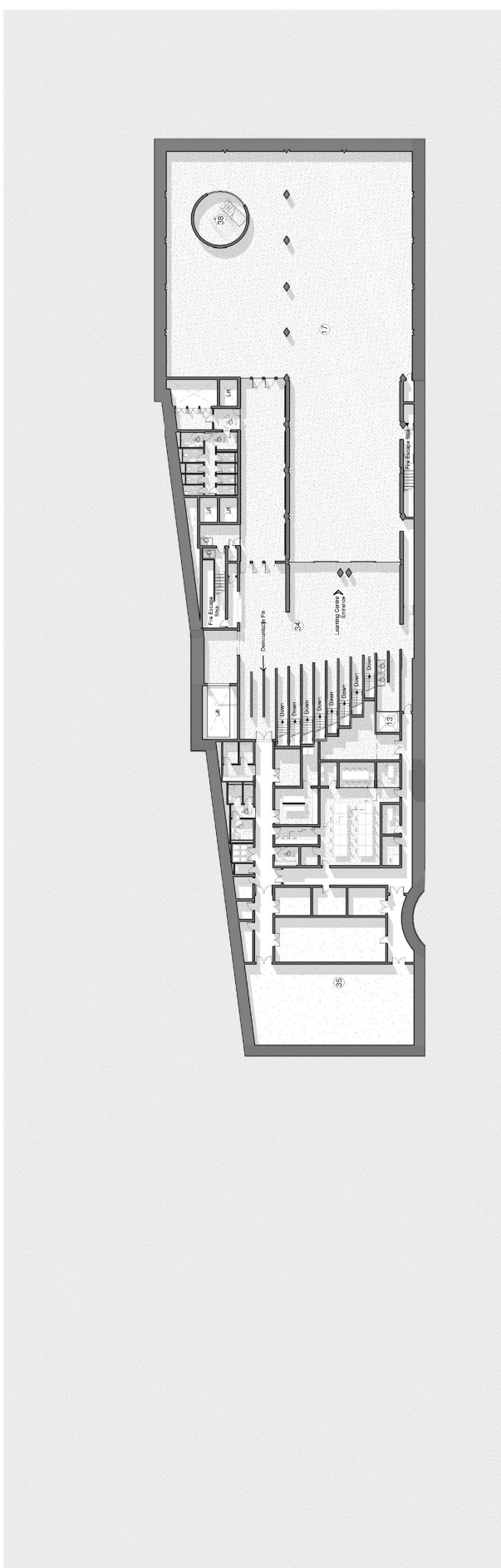
16.1.20 - Revise Not intended
 1. Date of issue changed

Revision	Date	Description
PO3	19.04.17	Planning Addendum
PO2	18.11.16	Updates to Graphical Quality & Sectioning Criteria and Drafting Issues for Planning
PO1	18.11.16	Issue for Planning

Sheet: **Planning Addendum**
 Rev: **PO3**

Client: **United Kingdom Holocaust Memorial Foundation**
 Project: **National Holocaust Memorial**

Drawing Title: **Proposed Basement Floor**
 Drawing No: **UKHM-AA-XX-B3-DR-A-03-101**
 Scale: As indicated @ A1
 Drawn By: GC
 Date: 18/11/16
 Checked By: JIN



- KEY:**
- 1. Public WCs
 - 2. Cycle / Bike storage / Generator
 - 3. Emergency exit
 - 4. Storage
 - 5. Storage
 - 6. Storage
 - 7. Bag collection
 - 8. Main exit
 - 9. Emergency exit
 - 10. Memorial fire
 - 11. Memorial fire
 - 12. Learning centre entrance
 - 13. Learning centre entrance
 - 14. Good fit entrance
 - 15. Escape stair exit
 - 16. Skylight
 - 17. Skylight
 - 18. Skylight
 - 19. Skylight
 - 20. Skylight
 - 21. Bus stop seating area
 - 22. River Thames
 - 23. River Thames
 - 24. Parliamentary education centre
 - 25. Parliamentary education centre
 - 26. Parliamentary education centre
 - 27. Parliamentary education centre
 - 28. Parliamentary education centre
 - 29. Parliamentary education centre
 - 30. Parliamentary education centre
 - 31. Parliamentary education centre
 - 32. Parliamentary education centre
 - 33. Parliamentary education centre
 - 34. Parliamentary education centre
 - 35. Exit ramps
 - 36. Feature stair

