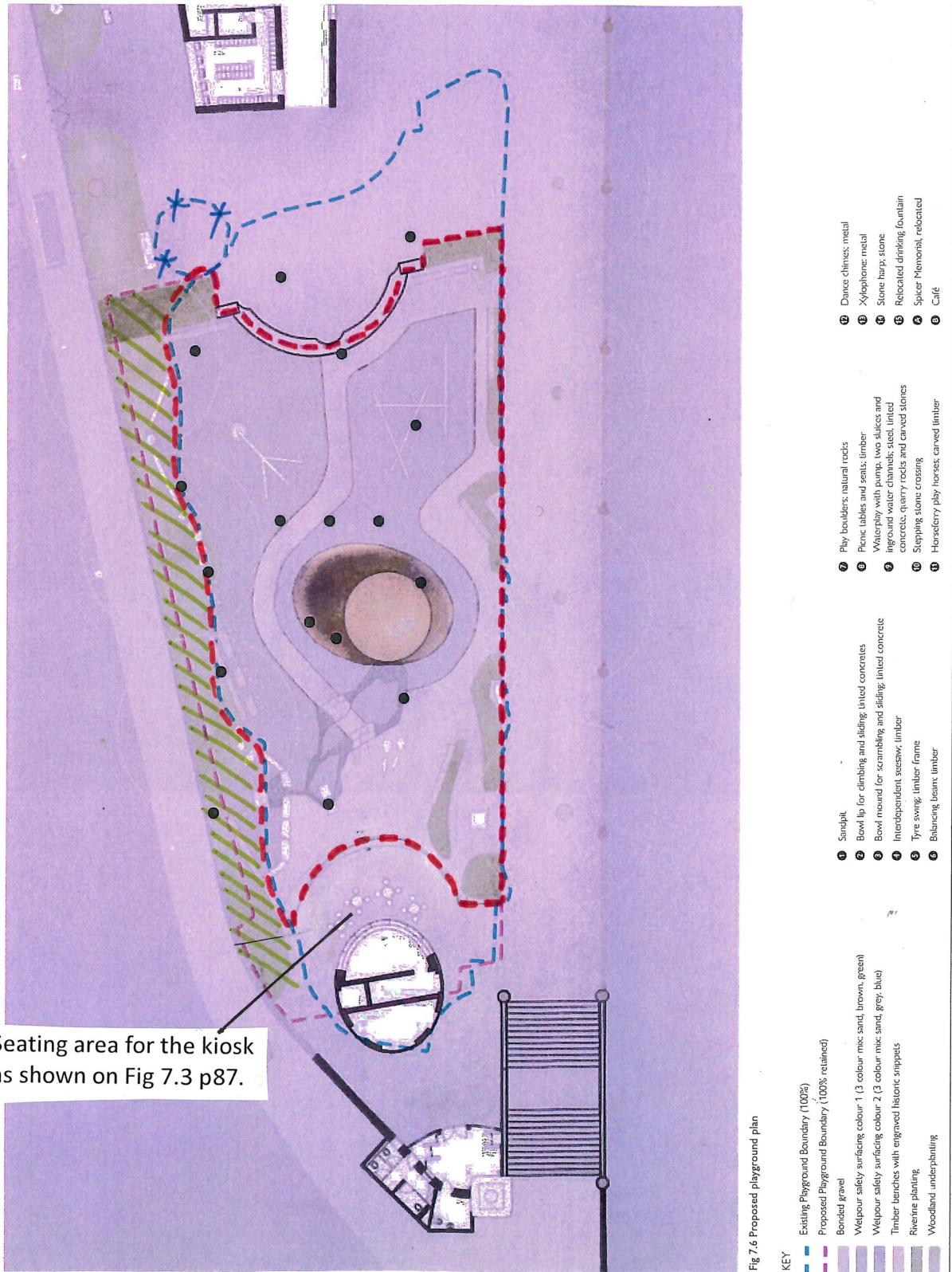


The roadside shrubbery planting, shown green, must be kept as a filter to help shelter the playground from the polluting effects of traffic and tyre dust.



Seating area for the kiosk as shown on Fig 7.3 p87.

The blue dashed line is the outline of the existing playground.
 The red dashed line is the outline of the proposed new playground with the roadside planting retained;
 this is approximately 75% of the area of the existing playground.

OVERLAY OF NEW PLAYGROUND AREA ON FIG 7.6 p89

HM add 1