

**Slide presentation accompanying EiC**

**Professor Robert Tavernor, BA, DipArch, PhD, RIBA**

Town and Country Planning Act 1990, Section 77; Town and Country Planning (Inquiries Procedure) (England) Rules 2000

Call-in Inquiry into the Proposed Development of the United Kingdom Holocaust Memorial and Learning Centre located within Victoria Tower Gardens, Millbank, London, SW1P 3YB

Local Planning Authority Reference: 19/00114/FULL

**Planning Inspectorate Ref: APP/X5990/V/19/3240661**

**Slide presentation accompanying EiC**  
**Professor Robert Tavernor, BA, DipArch, PhD, RIBA**

**1.0 Introduction**

- 1.1 The following slides are found in the main proof of evidence of Professor Robert Tavernor.
- 1.2 For ease of finding they display the same Figure numbers as the proof, and a reference to the HTVIA where relevant.

Professor Robert Tavernor  
3 November 2020

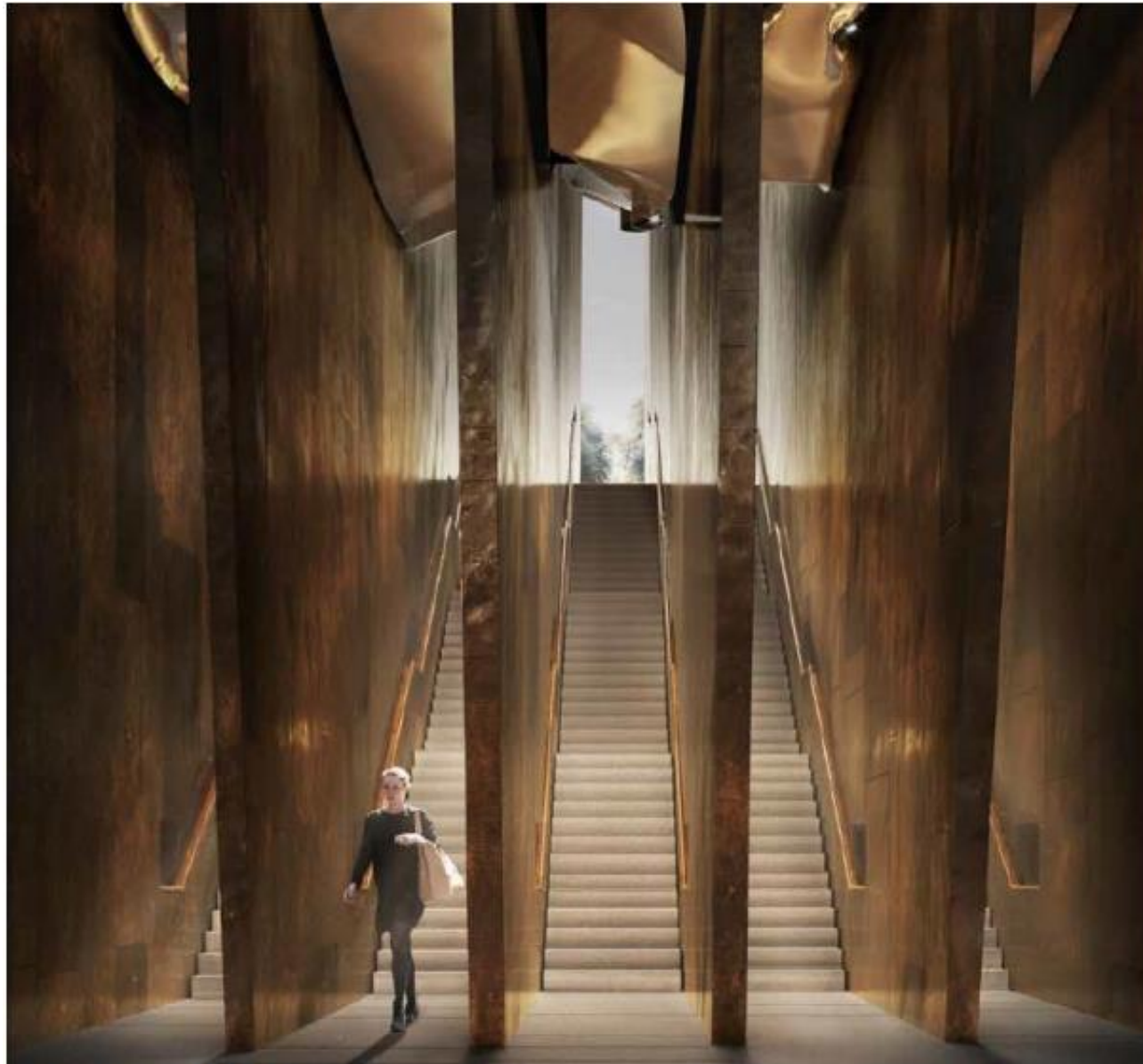


**Fig. 6: Proposed Entrance Pavilion**  
[HTVIA view 11]





**Fig. 7: Proposed Memorial Courtyard**  
[HTVIA view 22]



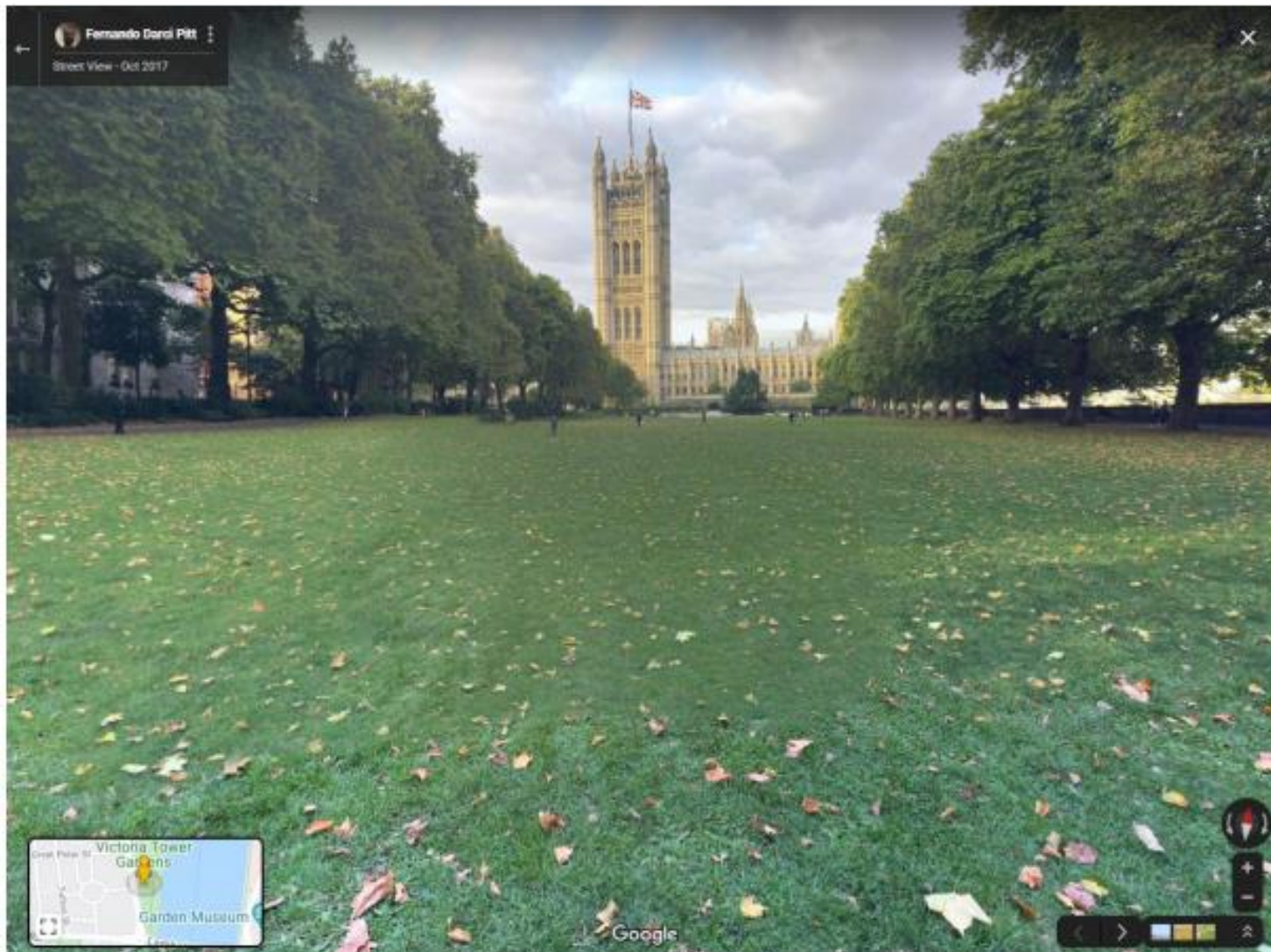
**Fig. 8:** Proposed Memorial stairs



**Figs. 9 and 10:** Proposed Memorial undercroft and main Learning Centre space

UKHMLC  
Tavernor slides for EIC\_03 Nov 2020





**Fig. 2:** Google Streetview looking north from adjacent to the Buxton Memorial Fountain



**Fig. 3:** Google Streetview looking south from Rodin's 'The Burghers of Calais'





**Fig. 4:** Google Streetview looking south from from adjacent to the Buxton Memorial Fountain



**Fig. 5: Aerial view of Victoria Tower Gardens as existing**





**Fig. 11: Proposed aerial view of raised landform and memorial beyond**



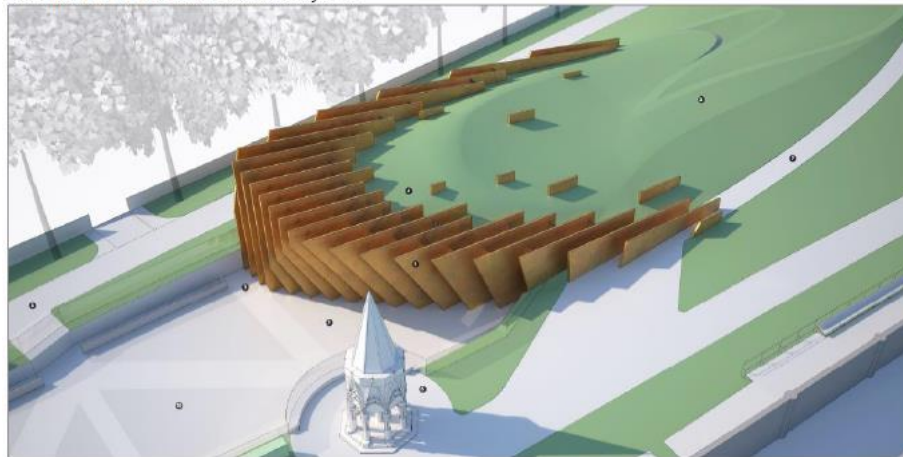


**Figs. 12-14:** Proposed refreshments kiosk and redesigned Horseferry Playground  
[HTVIA views 9 and 11]

**Sequence 1** (as slide 11 above plus Figs. 20 – 21/ [HTVIA Views 9 and 11](#))



**Fig. 20:** Looking north along River Walk towards the Memorial Fins, Buxton Memorial Fountain and Victoria Tower beyond



**Fig. 21:** Computer view showing relationship of entrance with Buxton Memorial Fountain



**Sequence 2** (Figs. 22 and 23): approaching from the Pankhurst Memorial and south along the sinuous diagonal path up the grass landform; and **Sequence 3** (Figs. 24 – 26/ HTVIA Views 16, 17, 18): from Rodin’s sculpture and south along the riverside walk.







UKHMLC  
Tavernor slides for EIC\_03 Nov 2020





UKHMLC  
Tavernor slides for EIC\_03 Nov 2020





UKHMLC  
Tavernor slides for EiC\_03 Nov 2020





UKHMLC  
Tavernor slides for EIC\_03 Nov 2020



Sequence 4(a) (Figs. 27 – 29/ HTVIA Views 21, 20 and 19): the path within the Gardens adjacent to the boundary with Millbank.







UKHMLC  
Tavernor slides for EIC\_03 Nov 2020





UKHMLC  
Tavernor slides for EIC\_03 Nov 2020



Sequence 4(b) (Figs. 29 – 32/ HTVIA Views 14 and 13): along the western pavement of Millbank)







UKHMLC  
Tavernor slides for EIC\_03 Nov 2020





UKHMLC  
Tavernor slides for EIC\_03 Nov 2020