
Sustainable Modes of Travel Strategy 2022



City of Westminster

Contents

City of Westminster has a statutory duty under the Education and Inspections Act 2006 to promote sustainable travel to and from school, and between schools and other institutions.

This strategy document, along with the work that is delivered and commissioned by the Road Safety Officer at City of Westminster, meets the statutory duty.

- Executive summary
- What is a school travel plan?
- Sustainable travel and road safety education
- School Travel Plan – Highway Schemes
- Air Quality
- Partnership working
- Communications
- Best practice
- Useful contacts and websites

Executive summary

City of Westminster has developed a Sustainable Modes of Travel Strategy (SMoTS) in line with the requirements outlined in the Education and Inspections Act 2006 which incorporates five main objectives:

- An assessment of the travel and transport needs of children, and young people within the authority's area;
- An audit of the sustainable travel and transport infrastructure within the authority that may be used when travelling to and from, or between schools/institutions;
- A strategy to develop the sustainable travel and transport infrastructure within the authority so that the travel and transport needs of children and young people are better catered for;
- The promotion of sustainable travel and transport modes on the journey to, from and between schools and other institutions; and
- The publication of Sustainable Modes of Travel Strategy.

SMoTS outlines how City of Westminster are assisting schools to produce and maintain approved School Travel Plans and promote and encourage sustainable travel and transport for children and young people from the age of 5 through to 16.

This Strategy will set out all the proposals and programmes that will be undertaken to encourage school communities to choose safer, healthier, and more environmentally friendly modes of travel.

To achieve the objectives of this Strategy, the following aims of WCC are:

- To encourage all schools in the City to have a School Travel Plan and level of accreditation in place with a view to monitor and evaluate in accordance to the Transport for London (TfL) [STARS](#) programme on an annual basis.
- To make Westminster a safer, healthier, more enterprising and more connected city.
- To investigate areas that have been identified as a road safety concern and where deemed feasible and funding available, improve the City's infrastructure for walking and cycling. This can help increase walking and cycling, and enhance the skills needed for safe and independent travel.
- To ease vehicle congestion and improve air quality outside schools in consideration of the [Mayor's Transport Strategy 2018](#) and [Westminster's Air Quality Manifesto](#).
- To contribute to the long-term health and wellbeing of children and young people by choosing a sustainable mode of transport via [Westminster's Walking Strategy](#) and [Cycling Strategy](#).
- To provide support, guidance and educational resources to encourage sustainable transport choices.

City of Westminster have circa 31,000 pupils that attend the 92 schools across 99 sites¹. The education establishment types are academies, independent, local authority, and special/alternative provision education establishments.

This Strategy builds upon the work already being undertaken by Westminster City Council and its partners to increase sustainable transport in the borough with the resources available. Priority will be given to groups of schools where the potential for achieving beneficial change in terms of safety, congestion, health and the environment is greatest.

Westminster City Council's Strategy is a living document and will be reviewed and published by 31st August annually.

For more information, please email Askhighways@westminster.gov.uk

¹ Some education establishments have more than one site.

What is a School Travel Plan?

A School Travel Plan aims to encourage healthier and more sustainable travel for journeys to and from school (i.e. walking, scooting and cycling) away from private car trips and contributing to the 'school run'. They identify practical measures to shift travel behaviour towards more sustainable and healthy modes.

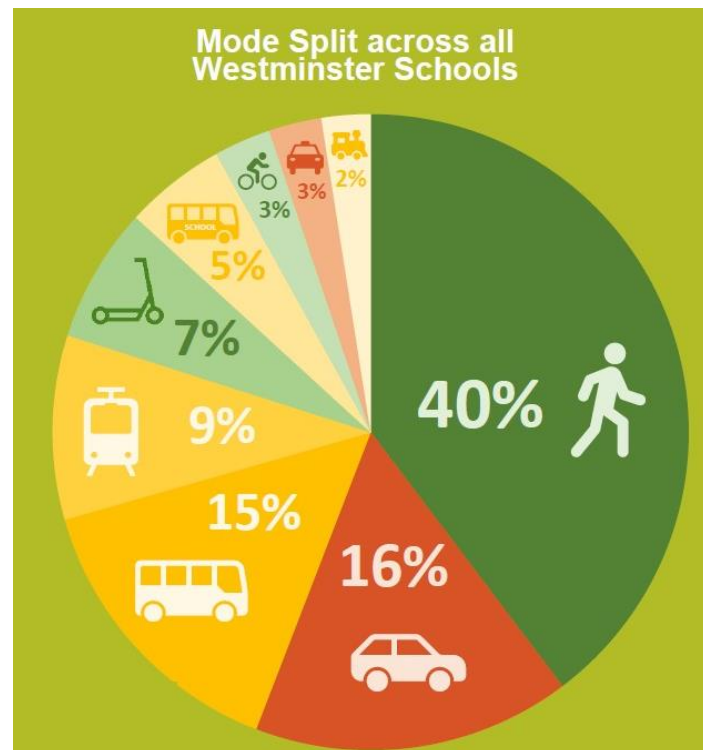
School Travel Plans are online documents which are produced by schools in response to their own community, road safety and sustainable travel needs and issues.

They are reviewed annually along with completing a school Hands Up travel survey which is used to inform any initiatives the school can implement to increase sustainable travel and improve road safety.

A School Travel Plan is a whole school project which can be linked to the curriculum and address a range of issues around school travel; from environmental education to health benefits, from skills and safety training and school-based activities to streetscape measures.

What modes of transport are used by pupils in Westminster?

71 schools participated in a hands up survey which amounted in 16,178 pupils being surveyed. Students were asked two questions: 1) *What mode of transport do you use to get to school* and 2) *What mode would you prefer to use*. Data collected is shown in the following formats.



Walking remains the most popular mode of travel for the surveyed pupils in Westminster when travelling to and from education establishments in Westminster.

50% of pupils travel to school using an active mode e.g., walking, cycling and by scooter.

A third of pupils travel to school by public transport: 15% by public bus, 9% by Tube, 5% by school bus and 2% by train.

Car use is the second most common mode of transport in Westminster schools.

In the STARS programme, a sustainable transport mode is any mode of transport that is not a private motor vehicle. This includes 'Park and Stride', where students are driven but walk or scoot the final ten minutes of the journey along with Public Bus, School Bus, Tube, Cycling, Walking and Scootering.

Overall, 84% of Westminster students travel to school using a sustainable mode.

The greatest sustainable mode split was 100% and was achieved by four schools:

- Harris Westminster Sixth Form
- Portland Place School
- Tachbrook Nursery School
- All Souls CofE Primary School

Transport for London STARS Accreditation Levels

STARS accreditation which recognises the work, time and effort schools have made to increase use of sustainable modes of travel and road safety awareness.

There are three levels of accreditation: Bronze, Silver and Gold.

So as of July 2022, the accreditation levels submitted to TfL stand at.

Bronze – 26

Silver – 7

Gold – 18²



² This accreditation levels are confirmed by Transport for London in September 2022.

Sustainable Travel and Road Safety Education

Walk to School Campaign

Walk to School Week in May and *International Walk to School Month* in October are usually promoted to all education establishments. At both times of the year, schools are encouraged to take part in activities that promote the benefits of walking, which in turn will encourage children, parents and staff to travel to school by a more sustainable and active mode of transport. Walking is the preferred mode of transport for pupils in City of Westminster.

Westminster Wiser Walking Scheme

This child pedestrian training scheme is offered to Year 2, 3, 4, 5 and 6 pupils at all Westminster primary schools and takes place throughout the academic year during term time. It consists of two sessions; a 20 minute classroom session and a 30 to 60 minute on-road session in groups of up to 6 pupils.

Years 2, 3 and 4 learn road safety skills to use with the help of an adult. We strongly recommend that this age group are always supervised by an adult when crossing roads. The scheme is based off of the Department for Transport's Kerbcraft model.

Years 5 and 6 are provided with training that is intended to give them the skills for independent travel in the future.

The scheme did not train any participants this academic year.³

Park & Stride

This initiative requires parents/carers to park a short distance away from the school entrance and then walk the rest of the way. This is an easy and gradual

step for parent/carers to increase their families' amount of active travel and physical activity every day.

It also reduces vehicle idling, congestion around the school entrance and improves air quality.

Parking legislation

For all education establishments, City of Westminster allows for a ten-minute window for drop off/collection of pupils at the start and end of the school day on single and double yellow lines during term time, whilst this activity is taking place.

This is to help reduce inappropriate parking behaviour and practices which can impact on road safety around the immediate vicinity of a school such as double parking, engine idling footway parking and blocking of residential driveways. Other road safety and school travel initiatives are offered to schools in conjunction with this scheme. Travel plans are encouraged so road safety and travel concerns can be addressed.

School Crossing Patrol Service

City of Westminster adopted the *School Crossing Patrol Service* from the Metropolitan Police in 2001 and continues to maintain a service at sites which meet the recommended criteria to help both children and adults alike to cross the road safely.

There are currently 7 School Crossing Patrols operating at various sites across the City of Westminster.



³ No delivery due to review of programme after the pandemic.

Road Safety Education and resources

Throughout each academic year, road safety education is offered to all schools. Schools can opt to book in theatre in education shows and workshops that are offered free of charge. They cover subject matter such as pedestrian and cycle safety, in-car safety and more.

Age-appropriate resources are available on the Department for Transport's THINK website at no charge.

There are also resources offered to schools throughout the academic year, such as theatre workshops, as well as general road safety support, guidance and advice from the Road Safety Officer.



This academic year saw 4978 pupils and 223 staff receiving and participating in active travel and road safety education workshops.

Special Educational Needs (SEN) Transport

Every academic year, pupils' journeys to and from school are assessed by the SEN Transport Team. If deemed appropriate, they will have assistance via a travel escort (including walking and public transport).

If this travel intervention is not appropriate, then transport on a shared bus or individual taxi is arranged.

Assessments are carried out by the Travel Care and Support Team.

Cycle training

The City of Westminster is committed to making cycling enjoyable and one of the preferred modes of transport for children travelling to and from school.

Anybody who lives, works or studies in Westminster is eligible for free cycle training provided by the City Council.

Cycle Confident, Westminster City Council's cycling provider trained 798 pupils from September 2021 to July 2022 which is an 80% increase compared with last academic year's training figures.⁴



Cycle Led Rides

Westminster Road Safety Officers in conjunction with Cycle Confident have produced cycle-led rides that are themed around the City's history and culture.

Some of these rides are available to schools.

⁴ Reduction in delivery due to pandemic throughout 2020 and 2021.

Cycle/scooter storage

Education establishments that would like cycle or scooter parking are assessed under the School Travel Plan Programme. Up to 16 schools have requested additional cycle and scooter parking inside their school site and outside the immediate vicinity.



Junior Travel Ambassadors (JTA)

The scheme encourages peer-to-peer engagement and provides schools with free toolkits and guidance in order to promote safer, active and independent travel within the school community.

Westminster schools have a mixture of JTAs, school councils or eco teams to communicate road safety and sustainable travel information to their schools.

**STARS JUNIOR
TRAVEL AMBASSADOR**
A TfL COMMUNITY PROJECT

Youth Travel Ambassadors (YTA)

**STARS YOUTH
TRAVEL AMBASSADORS**
A TfL COMMUNITY PROJECT

This is a youth-led education project developed by Transport for London delivered by the London Transport Museum.

Young people are given the opportunity to create and deliver a campaign to address a travel and/or road safety issue that affects them and their local community.

Transport for London Zip Oyster



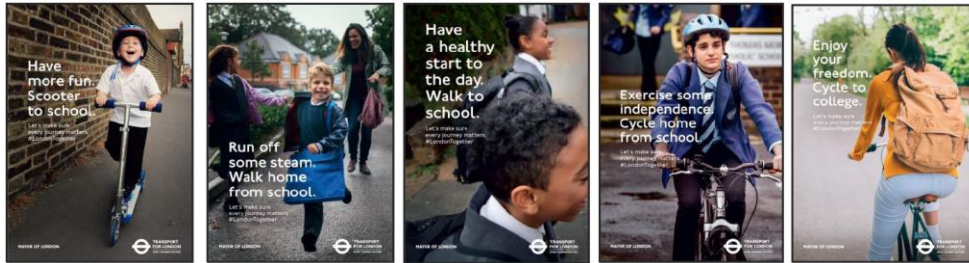
Since September 2005 all children living in London who are 15 or under in age have been able to travel for free on London's buses and trams if they hold the relevant Zip Oyster Card. There is also a 16+ Zip Oyster photo card that allows free bus and tram travel for those that live in London.

Parents/carers could apply online via Transport for London's website.

Transport for London School Party Travel Scheme

This scheme provides free off-peak travel from Monday to Friday to schools based in London (including summer, special needs and nursery schools) that are visiting an educational or cultural venue within the city. Schools just have to register with Transport for London to take advantage of the scheme.

Transport for London: Travel guidance for schools



There is a dedicated [webpage](#) providing schools, parents/guardians and pupils with travel advice.

This consists of links to resources such as [STARS Journey Planner](#) and signposts to [STARS](#).

School Travel Plan - Highway Schemes

Through the travel plan programme, schools highlight road safety and active travel concerns that they feel have a direct impact on the safety of their pupils' journey to and from school.



Through assessing these concerns, it is sometimes deemed appropriate to implement changes to the roads.

Highway schemes could include, but are not limited to; school warning signs, review of school keep clear markings, road closures and improvement of pedestrian crossings.

Highway schemes are implemented via funding from the following areas; TfL Local Implementation Fund/Department for Transport, capital funding, section 106 and/or Community Infrastructure Levy where available and approved.

The following highway schemes have been implemented under the School Travel Plan Programme.

School/Location	Highway improvements
Amberley Road, ARK Atwood Academy Primary	Kerb build outs, footway buildouts and upgrade of existing informal crossing points.
Marlborough Hill, George Elliot School	Footway extension outside main entrance and refresh of school keep clear markings.
Marlborough Hill, Harris St. John's Wood Academy	School keep clear markings, reallocation of parking for kerb build out with raised table.
Fernhead Road, St Luke's CE Primary School	Raised zebra crossing, footway extension and refresh, improvement of pedestrian

	facilities at nearby junctions and installation of island for improved cycle lane facilitation.
Drury Lane, St Clement Danes CE Primary School	Parklet installed with reallocation of School keep clear markings, extension of footway outside the main entrance and improvement of pedestrian facilities at nearby junctions.
Chippenham Mews, St Peter's CE Primary School	Junction improvement with build outs at Chippenham Mews/Marylands Road junction for pedestrian comfort.

ActiveStreets Programme



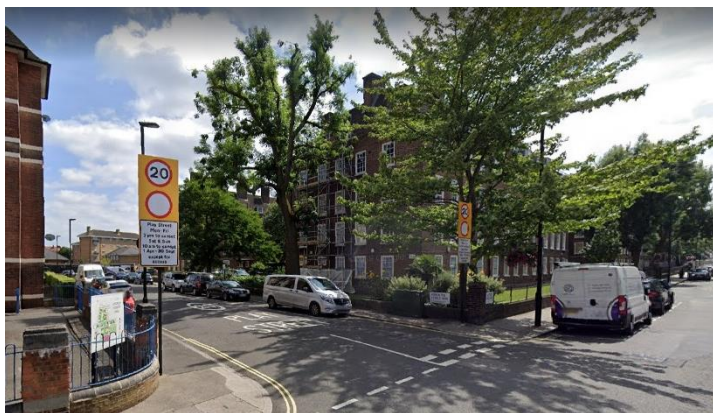
The [Active Streets](#) programme was established in a key strategy commitment of the ActiveWestminster strategy - Activate Your City, Lives and Neighbourhoods, as well as the [Biodiversity and Open Spaces](#) strategy.

The Active Streets programme is delivered in collaboration with City Highways and the Sports Leisure and Active Communities Leisure Services in order to create streets that can garner more opportunities for physical activity, active travel, improved air quality and healthier lifestyles.

The ActiveStreets programme consists of three types of ActiveStreets:

‘Play Streets’ a permanent designation which will provide priority over traffic to children and families to play in streets at specified times. This is underpinned by Department for Transport legislation (Section 29, Road Traffic Act 1984).

The first Play Street was installed on Fisherton Street and Luton Street on 29th April 2019.



From August to September 2020, there were 8 locations that have had a semi-permanent Play Street in place.

‘Street Play’ Facilitated by temporary road closures (Section 16a, Road Traffic Regulation Act 1984) for children and families to play in streets at specified day(s), times and locations.

The Street Play Policy was approved in June 2020 and the online [application](#) is available for local residents and schools to apply for Street Play sessions.

‘School Streets’ Provides a pedestrian and cycle zones (Section 6, Road Traffic Regulation Act 1984) outside the school main entrance usually in operation at school drop-off and collection times, Monday to Friday term-time only.

The first School Street was launched on Enford Street outside St Mary’s Bryanston Square CE Primary School on Tuesday 23rd April 2019.

In January 2022 there were **10** locations that were progressed as trial [School Streets](#) under an Experimental Traffic Order. The full programme has a dedicated webpage which provides further information and the opportunity to provide feedback throughout the trial.

Air Quality

An air quality sensor pilot project at schools has been established by the Smart City programme, aiming to engage residents and empower communities to drive change through the use of tech and innovation. The pilot aimed to work with schools to reduce private car journeys to and from school.

Four primary schools were selected for the pilot, representing schools with existing high proportions of children who travel to school by private car; the selected schools for the pilot were:

- Edward Wilson Primary School
- St Joseph's Catholic Primary School
- St Saviour's C of E Primary School
- Wilberforce Primary School

Each school was provided with a near real time 'Zephyr' air quality sensor, located at the drop off/pick up locations, to monitor the impact on air quality levels throughout the course of the day. The schools were provided with termly information packs about the air quality data from the sensors along with information about sustainable travel methods and lesson plan suggestions.

Partnership working

Healthy Schools Awards



The main aim of the Healthy Schools Partnership is to support and encourage schools to develop and deepen their focus on health and wellbeing which will support the attainment, achievement and happiness of both their pupils, staff and wider school communities.

The Healthy Schools Partnership is an alliance of Local Authority and health services together with a range of other agencies that work with schools.

All children and young people have a right to be healthy and to achieve at school and in life. Healthy Schools provides opportunities for enhancing emotional and physical aspects of health that will lead to improved health, reduced health inequalities, and increased social inclusion and will raise achievement for all.

Healthy Schools is not just about children and young people, it is about involving the whole school community together with local services and agencies. And it is not just what happens in the curriculum but about the entire school day.

Schools can participate and gain recognition at the following levels: Healthy Schools London Bronze, Silver and Gold Awards.

Communications

City of Westminster has its own communication team that is dedicated to disseminating information to various audiences throughout the City of Westminster and beyond.

Road safety and sustainable travel information is relayed externally via Westminster's printed literature, on-street messaging i.e., banners and social media accounts i.e., Facebook, Twitter and Instagram.

Westminster communicates with education establishments via telephone calls, emails, site visits, virtual meetings, seminars, webinars and events where applicable and available.

Best practice

St Mary's Bryanston Square CE Primary School, Enford Street

Westminster Council has installed the first electric School Street sign in the country, making it more visible for drivers to know when there is a pedestrian and cycle only zone during school drop-off and pick-up times.

The new electric sign has been installed outside St Mary's Bryanston Square CE Primary School, three years after they became the first in Westminster to have a designated School Street.

The sign has been specially designed to light up when the school street is in operation and is de-illuminated when it's not in operation, which includes evenings, weekends, bank holidays and during school holidays.

Having the electric signs means it is more visible to drivers to comply with the times of operation and it can be managed online.



Edward Wilson Primary School, Senior Street

As part of the Smart City programme, Edward Wilson Primary School, along with four others, were provided with a near real time 'Zephyr' air quality sensors, located at the drop off/pick up locations, to monitor the impact on air quality levels throughout the course of a day.

The schools were provided with termly information packs about the air quality data from the sensors along with information about sustainable travel methods and lesson plan suggestions.

There was also the opportunity to present about air quality during an assembly.

On Clean Air Day, 16 June 2022, an [online portal](#) was launched to enable the public to view near – real time air quality from the sensors in a visual way, along with supporting advice on school travel methods and health advice.



15:09 · 16/06/2022 · Twitter Web App

4 Retweets 4 Likes



Useful contacts and services

Road Safety Education, Travel Plans and Active Travel Initiatives

E: Askhighways@westminster.gov.uk

W: www.westminster.gov.uk/roads-and-travel/walking-and-cycling

Active Streets Programme

E: active@westminster.gov.uk

W: active.westminster.gov.uk/activestreets

School Streets Programme

E: Askhighways@westminster.gov.uk

W: www.westminster.gov.uk/school-streets

Legible London Programme

E: Askhighways@westminster.gov.uk

Cycle Training

W: www.westminster.gov.uk/roads-and-travel/walking-and-cycling/city-cycle-courses

SEN Transport

Transport Commissioning Team

E: passengertransport@rbkc.gov.uk

Schools Admissions Team

W: www.westminster.gov.uk/children-and-families/education/special-educational-and-additional-needs#transport-assistance

Parking Service

E: parkingservices@westminster.gov.uk

W: www.westminster.gov.uk/parking

Sport Leisure and Active Communities

E: active@westminster.gov.uk

W: www.active.westminster.gov.uk

Westminster's Children First Magazine

E: childrenfirst@westminster.gov.uk

STARS: A TfL Community Project

Transport for London, Education and Training Team

W: www.tfl.gov.uk/stars

Transport for London

W: www.tfl.gov.uk

Metropolitan Police: Westminster Safer Transport Team

W: www.met.police.uk/a/your-area/safer-transport-teams/

Healthy Education Partnership

T: 0800 048 8566

E: admin@healtheducationpartnership.com

W: healtheducationpartnership.com/borough/westminster/

Change4Life Programme

W: www.family-action.org.uk/what-we-do/children-families/change4lifeservice/

Eco Schools Programme

W: www.eco-schools.org.uk

Active Travel and Road Safety Programme

ACTIVITIES

Cycle training	Road Safety site visit	School Crossing Patrol	Pre-driver education	Road safety and Active Travel Education	TfL Safety & Citizenship sessions	Parking enforcement requests	Air Quality intervention	STARS Accreditation Level
----------------	------------------------	------------------------	----------------------	---	-----------------------------------	------------------------------	--------------------------	---------------------------

Ref	School	Ward	Street									
1	Abercorn School (Early Years)	Abbey Road	Abercorn Place									
2	Abercorn School (Prep)	Marylebone High Street	Portland Place									
3	Abercorn School (Pre-Prep)	Bryanston and Dorset Square	Marylebone Road									
4	Abingdon House School	Bryanston and Dorset Square	Broadley Terrace	✓								
5	All Souls CE Primary School	West End	Riding House Street	✓	✓			✓		✓		✓
6	ARK Atwood Academy Primary School	Westbourne	Amberley Road		✓			✓		✓	✓	✓
7	Arnold House School	Abbey Road	Loudoun Road									✓
8	Bales Private School and Sixth Form College	Queens Park	Harrow Road									
9	Barrow Hill Juniors	Regent's Park	Bridgeman Street		✓			✓		✓	✓	✓
10	Burdett Coutts and Townshend C of E Primary School	Vincent Square	Rowington Close					✓				
11	Christ Church Bentinck CE Primary School	Church Street	Cosway Street	✓				✓			✓	✓

				Cycle training	Road Safety site visit	School Crossing Patrol	Pre-driver education	Road safety awareness education	TfL Safety & Citizenship sessions	Parking enforcement requests	Air Quality Assemblies/Lessons	STARA Accreditation Level
12	Churchill Gardens Primary Academy	Tachbrook	Ranelagh Road	✓				✓				✓
13	College Park School	Bayswater	Garway Road		✓		✓					✓
14	Connaught House School	Hyde Park	Stanhope Place								✓	✓
15	Dorothy Gardner Centre	Queens Park	Shirland Road		✓							✓
16	Eaton House School	Knightsbridge and Belgravia	Eaton Gate, Eaton Square									✓
17	Eaton Square School	Warwick	Eccleston Square									✓
18	Eaton Square School (Site 2)	Warwick	Eccleston Square									✓
19	Edward Wilson Primary School	Westbourne	Bourne Terrace		✓			✓			✓	✓
20	Essendine Primary School	Maida Vale	Essendine Road	✓	✓	✓		✓			✓	✓
21	Fairley House School	Vincent Square	Causton Street									
22	Francis Holland School (Regent's Park)	Bryanston and Dorset Square	Clarence Gate, Ivor Place									
23	Francis Holland School (Sloane Square)	Churchill	Graham Terrace		✓							✓
24	Gateway Academy	Church Street	Capland Street		✓	✓		✓	✓			✓
25	George Eliot Primary School	Abbey Road	Marlborough Hill	✓	✓	✓		✓		✓	✓	✓
26	Halcyon London International School	Bryanston and Dorset Square	Seymour Place		✓							✓
27	Hallfield Primary School	Lancaster Gate	Hallfield Estate	✓	✓			✓			✓	✓

				Cycle training	Road Safety site visit	School Crossing Patrol	Pre-driver education	Road safety awareness education	TfL Safety & Citizenship sessions	Parking enforcement requests	Air Quality Assemblies/Lessons	STARA Accreditation Level
28	Hampden Gurney CE Primary School	Bryanston and Dorset Square	Forest Street		✓			✓		✓	✓	
29	Harris Academy, St Johns Wood	Abbey Road	Marlborough Hill		✓			✓				
30	Harris Westminster Sixth Form	St James's	Tothill Street		✓							
31	International Community School (Primary)	Bryanston and Dorset Square	Wyndham Place									
32	International Community School (Secondary)	Hyde Park	Star Street									
33	Kensington Park School	Lancaster Gate	Bark Place									
34	King Solomon Academy Older Year Site	Church Street	Penfold Street		✓		✓					
35	King Solomon Academy Younger Year Site	Little Venice	Crompton Street		✓			✓				
36	L'ecole Bilingue Elementaire	Little Venice	St Mary's Terrace		✓							✓
37	L'ecole Internationale Franco-Anglaise Ltd (EIFA)	Marylebone High Street	Portland Place									
38	Mary Paterson Nursery School	Harrow Road	Riverton Close									✓
39	Marylebone Boys' School	Hyde Park	North Wharf Road		✓		✓					
40	Millbank Academy	Vincent Square	Lupus Street					✓				
41	Miss Daisy's Nursery, Hyde Park	Hyde Park	Albion St, St George's Fields									

				Cycle training	Road Safety site visit	School Crossing Patrol	Pre-driver education	Road safety awareness education	TfL Safety & Citizenship sessions	Parking enforcement requests	Air Quality Assemblies/Lessons	STARA Accreditation Level
42	Naima Jewish Preparatory School	Maida Vale	Andover Place									
43	Ormiston Beachcroft Academy	Abbey Road	Finchley Road		✓							
44	Our Lady of Dolours RC Primary School	Westbourne	Cirencester Street	✓				✓			✓	
45	Paddington Academy	Harrow Road	Marylands Road									
46	Pimlico Academy	Tachbrook	Lupus Street									
47	Pimlico Primary	Tachbrook	Lupus Street					✓				
48	Portland Place School	Marylebone High Street	Portland Place									✓
49	Portman Early Childhood Centre	Church Street	Salisbury Street									
50	Prince's Garden Preparatory School	Knightsbridge and Belgravia	Princes Gate		✓							
51	Queen Elizabeth II Jubilee School (Including Kennet West Skills Centre)	Harrow Road	Kennet Road									✓
52	Queen's College London	Marylebone High Street	Harley Street				✓		✓			✓
53	Queens College Preparatory School (Site 2)		Portland Place									
54	Queens Park Primary School	Queen's Park	Droop Street		✓			✓		✓	✓	✓
55	Robinsfield Infant School	Abbey Road	Ordnance Hill					✓				✓

				Cycle training	Road Safety site visit	School Crossing Patrol	Pre-driver education	Road safety awareness education	TfL Safety & Citizenship sessions	Parking enforcement requests	Air Quality Assemblies/Lessons	STARA Accreditation Level
56	Sir Simon Milton University Technical College	Warwick	Sutherland Street		✓							
57	Soho Parish C of E Primary School	West End	Great Windmill Street		✓			✓				✓
58	Southbank International School (Westminster)	Marylebone High Street	Portland Place									
59	St Augustine's Federated C of E High School	Maida Vale	Kilburn Park Road		✓		✓	✓				✓
60	St Augustine's Federated C of E Primary School	Maida Vale	Kilburn Park Road		✓			✓				
61	St Barnabas' C of E Primary School	Churchill	St Barnabas Street	✓	✓			✓			✓	✓
62	St Christina's School	Regent's Park	St Edmund's Terrace	✓	✓							✓
63	St Clement Dane's C of E Primary School	St James's	Drury Lane	✓	✓			✓				✓
64	St Edward's RC Primary School	Bryanston and Dorset Square	Lisson Grove	✓	✓	✓		✓	✓	✓	✓	✓
65	St Gabriel's C of E Primary School	Tachbrook	Churchill Gardens	✓				✓				✓
66	St George's Catholic School (Maida Vale)	Maida Vale	Lanark Road				✓	✓				
67	St George's Hanover Square C of E Primary School	West End	South Street		✓			✓		✓	✓	
68	St James and St Johns CE Primary School	Lancaster Gate	Craven Terrace		✓			✓		✓	✓	
69	St John's Wood Pre-Preparatory School	Regent's Park	St John's Hall, Lord's Roundabout									

				Cycle training	Road Safety site visit	School Crossing Patrol	Pre-driver education	Road safety awareness education	TfL Safety & Citizenship sessions	Parking enforcement requests	Air Quality Assemblies/Lessons	STARA Accreditation Level
70	St Joseph's RC Primary School	Little Venice	Randolph Avenue		✓	✓		✓			✓	✓
71	St Luke's C of E Primary School	Queens Park	Fernhead Road		✓							
72	St Mary Magdalene's RC Primary School	Westbourne	Rowington Close	✓	✓			✓		✓	✓	✓
73	St Marylebone CE School	Marylebone High Street	Marylebone High Street		✓		✓	✓				✓
74	St Marylebone CE School (Sixth Form)	Marylebone High Street	Blandford Street									
75	St Mary's Bryanston Square C of E School	Bryanston and Dorset Square	Enford Street	✓				✓				✓
76	St Mary's of the Angel RC Primary School	Westbourne	Shrewsbury Road	✓	✓			✓		✓	✓	✓
77	St Matthew's CE Primary School	St James's	St Ann's Street		✓	✓				✓	✓	✓
78	St Peter's C of E Primary School	Harrow Road	Chippenham Mews	✓	✓			✓			✓	✓
79	St Peter's Eaton Square CE Primary School	Warwick	Lower Belgrave Street		✓			✓				✓
80	St Saviour's C of E Primary School	Little Venice	Shirland Road	✓				✓			✓	✓
81	St Stephen's C of E Primary School	Bayswater	Westbourne Park Road	✓				✓				
82	St Vincent de Paul RC Primary School	Vincent Square	Morpeth Terrace	✓				✓				
83	St Vincent RC Primary School	Marylebone High Street	St Vincent Street		✓	✓		✓				✓

				Cycle training	Road Safety site visit	School Crossing Patrol	Pre-driver education	Road safety awareness education	TfL Safety & Citizenship sessions	Parking enforcement requests	Air Quality Assemblies/Lessons	STARA Accreditation Level
84	Sylvia Young Theatre School	Bryanston and Dorset Square	Nutford Place		✓							
85	Tachbrook Nursery School	Tachbrook	Aylesford Street									✓
86	The American School in London	Abbey Road	Waverley Place									
87	The Grey Coat Hospital (Site 1)	St James's	Greycoat Place				✓					
88	The Grey Coat Hospital (Site 2)	Vincent Square	Regency Street									
89	The St Marylebone Church of England Bridge School	Queens Park	Third Avenue									✓
90	Westminster Abbey Choir School	St James's	Dean's Yard									
91	Westminster Academy	Westbourne	Harrow Road		✓		✓	✓				✓
92	Westminster Cathedral Choir School	Vincent Square	Ambrosden Avenue									
93	Westminster Cathedral RC Primary School	Tachbrook	Bessborough Place					✓				
94	Westminster City School	St James's	Palace Street				✓					✓
95	Westminster School	St James's	Dean's Yard									
96	Westminster Under School	Vincent Square	Douglas Street		✓			✓				✓
97	Wetherby Preparatory School	Bryanston and Dorset Square	Bryanston Square									✓
98	Wetherby Senior School	Marylebone High Street	Marylebone Lane									✓
99	Wilberforce Primary School	Queens Park	Beethoven Street		✓			✓			✓	