



Your guide to Council Tax

2022/2023



City of Westminster

Why am I receiving this booklet?

This booklet has been developed for Westminster residents to help you have a clearer understanding of your Council Tax in 2022–23. You pay Council Tax for your home if you fit the following criteria:

- Resident and the owner
- Resident and a tenant
- Owner if the property is not someone's sole or main residence

Westminster has frozen its element of Council Tax used for general purposes and increased the element ring-fenced for Adult Social Care by 1%. This gives an overall Westminster Council Tax level of £468.54 for 2022/23 for Band D properties.

If you do not believe you are eligible to pay Council Tax this year, please get in touch with the council via the contact channels outlined on your Council Tax bill.

Contents

Council funding	3
Council Tax rates	4–5
How to pay	6
Support and advice	7
Bogus Communications	8

Contacting the council

You can contact us if you need information or have any problems regarding anything to do with Council Tax.

Get information online:
westminster.gov.uk/council-tax




You can email your query to:
westminstercounciltax1@secure.capita.co.uk

You can reach us by post at:
**Westminster City Council,
Council Tax, P.O. Box 165,
Erith, DA8 9DW**

Our call centre number is: **0343 178 2743**

Please contact us on **0343 178 2743** if you would like a copy of this document in Braille, large print or another language.

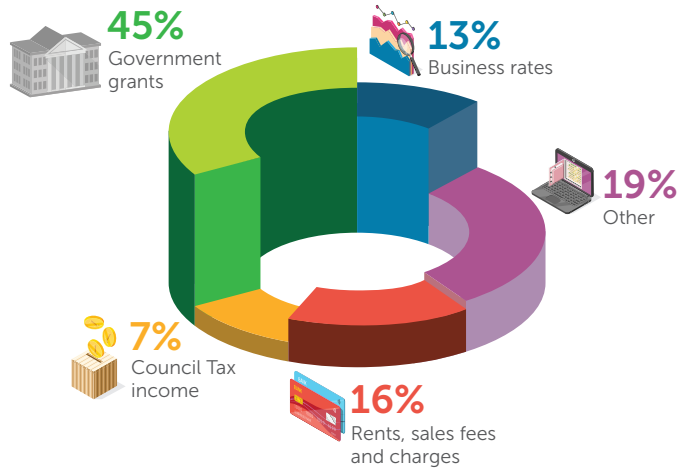
For the latest news from Westminster City Council, visit our website at **westminster.gov.uk**, or follow us on social media:

 **[@CityWestminster](https://twitter.com/CityWestminster)**  **[@CityWestminster](https://www.instagram.com/CityWestminster)**  **[/CityWestminster](https://www.facebook.com/CityWestminster)**

You can also sign up to receive our regular email newsletters keeping you informed of the very latest news about the council and your local area at **westminster.gov.uk/newsletters**

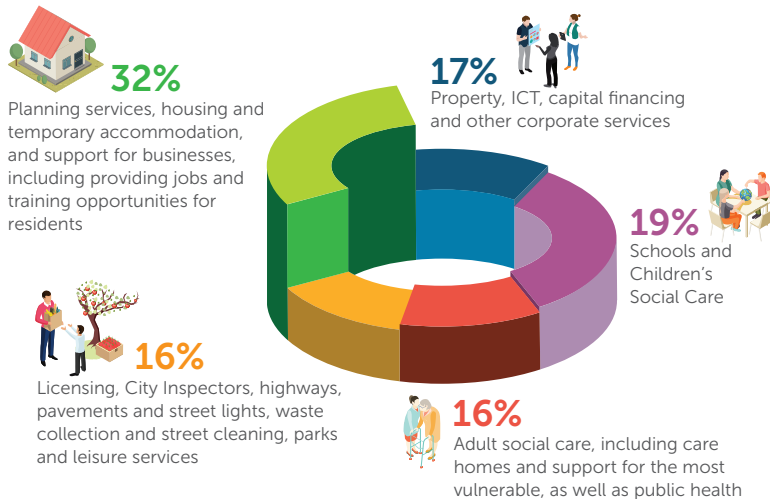
Where our funding comes from

Council Tax only makes up a portion of the council's overall income each year. The full breakdown is as follows:



How we invest in our services

All money raised is invested in council services across the City (excluding schools and public health services which receive their funding separately). These include:



For more information, please visit westminster.gov.uk/council-tax

How much Council Tax will I pay for 2022/2023?

You can find out how much Council Tax you will pay each year by finding out the valuation band of your property. This is based on how much your property was worth in 1991.

The valuation rates are:

Band	Valuation rates
A	Up to £40,000
B	£40,001 to £52,000
C	£52,001 to £68,000
D	£68,001 to £88,000
E	£88,001 to £120,000
F	£120,001 to £160,000
G	£160,001 to £320,000
H	More than £320,000

The band of your property is also shown on the bill we send to you, just below where it says: 'Council Tax demand'.

By looking up your band on the table below, you will see your total Council Tax payment for the year.

Band	WCC (£)	GLA precept (£)	Total (£)
A	312.36	263.73	576.09
B	364.42	307.68	672.10
C	416.48	351.64	768.12
D	468.54	395.59	864.13
E	572.66	483.50	1,056.16
F	676.78	571.41	1,248.19
G	780.90	659.32	1,440.22
H	937.08	791.18	1,728.26

Your council tax bill if you live in Queen's Park

If you live in Queen's Park, an additional precept is applied for the Queen's Park Community Council, created in April 2014:

Band	WCC (£)	GLA precept (£)	QP precept (£)	Total (£)
A	312.36	263.73	31.54	607.63
B	364.42	307.68	36.80	708.90
C	416.48	351.64	42.05	810.17
D	468.54	395.59	47.31	911.44
E	572.66	483.50	57.82	1,113.98
F	676.78	571.41	68.34	1,316.53
G	780.90	659.32	78.85	1,519.07
H	937.08	791.18	94.62	1,822.88

If you live in Montpelier Square, an additional precept is applied:

Band	WCC (£)	GLA precept (£)	MS precept (£)	Total (£)
A	312.36	263.73	414.35	990.44
B	364.42	307.68	483.40	1,155.50
C	416.48	351.64	552.46	1,320.58
D	468.54	395.59	621.52	1,485.65
E	572.66	483.50	759.64	1,815.80
F	676.78	571.41	897.75	2,145.94
G	780.90	659.32	1,035.87	2,476.09
H	937.08	791.18	1,243.04	2,971.30

The GLA Precept: A proportion of your Council Tax goes towards funding services provided by the Greater London Authority. This includes London-wide transport, policing and fire services. The budget for this is set each year by the Mayor of London and is automatically included in the amount of Council Tax you pay.

How to pay your Council Tax

By Direct Debit/ebilling

Help us save money and protect the environment by signing up for ebilling and paying your Council Tax by Direct Debit.

Paying by Direct Debit is our preferred method of payment as it is quick, accurate and secure. Furthermore, the government's £150 Council Tax Rebate to assist with energy costs is likely to be paid first to those residents for whom we hold bank account details.

Simply head online to **westminster.gov.uk/council-tax/pay-your-council-tax** to find the links to set up your Direct Debit payments.

By telephone

Alternatively, you can pay by debit or credit card by using our 24-hour automated payment line: **0203 77 22 602**. You'll need your 9-digit account number which can be found on your Council Tax bill.

In person

You can also pay by cash, cheque or debit card at any bank, or at any post office branch in the Westminster area. If you are paying at a Post Office by cheque it should be made payable to Post Office Ltd.



Support and advice

Council Tax Support

Council Tax Support could help pay towards some, or all, of your Council Tax bill if you are on a low income, even if you own your own home.

The maximum amount of Council Tax Support payable is 100% of the charge. This is dependent on individual circumstances, such as if you live alone and your age. Your Council Tax Support will normally be deducted from the Council Tax bill we send you.

You can get more information about claiming Housing Benefit and Council Tax Support by visiting **GOV.UK**

Discounts and exemptions

Some people or properties are eligible for a discount on their Council Tax or could be exempt from paying. These can include:

- Students
- Single persons
- Care home patients and care workers



📍 Please visit **westminster.gov.uk/council-tax/apply-council-tax-discounts-and-exemptions** to see the full list of discounts and exemptions and for details on how to apply in each category.



Bogus callers advice

Be aware of bogus Council Tax callers

We are aware that members of the public are receiving bogus calls from people pretending to be from our Council Tax department.

The bogus callers advise the payer of a reduction in the Council Tax banding on their property, and that they are due a substantial refund. The bogus caller then asks for credit or debit card or bank account details so the refund can be made.

We do not tell Council Tax payers of possible refunds by telephone. If you receive such calls, do not provide the caller with any personal details.

If you receive a call from someone claiming to be from Westminster City Council and have doubts about their legitimacy, then please ask for their name, department and extension number and call **034 3178 2743** to check their identity.

If, after this, you still think the caller is bogus, then please report the matter to our fraud hotline on **020 7361 2777**.