



Welcome to our last newsletter, informing you of the major works progress we have made over the last few months.

With spring upon us, we can look forward to brighter, warmer days which is something to really look forward to.

The cladding works have gone extremely well. You can find a full update on the reverse of this newsletter.

We would like to say a huge thank you, to you all, for your cooperation during these works. If you would like to leave any feedback, please email [WCCenquiries@unitedliving.co.uk](mailto:WCCenquiries@unitedliving.co.uk). Feedback is very important to us, in order for us to continually improve our services.

## COVID-19 SAFE WORKING PRACTICES ON SITE

Keeping you and our teams' safe is our top priority. Our new systems of work will ensure we take every step possible to ensure the health and safety of every person we come into contact within the course of our daily work including staff, clients, residents, supply chain and the general public.

### Glastonbury House: Built in 1969



#### Site Team



**Quince**

Site Manager

07736 270 554



**Ahmed**

Resident Liaison Officer

07803 509 946

Or

0800 023 1722

For out of hours  
emergencies between  
5.30pm – 8.00am, please  
call

01322 660226



## End of Works Update

Overall the works have gone very well. We were very weather reliant and consequently the sequence of works and progress was affected by this. Consider also the close proximity of the train line which was also a factor.

Storm Eunice didn't deter from the scaffold wrap (Scaffold wrapping is used to provide weather protection and environmental containment, enabling contractors to avoid delays caused by changes in the weather) and it held up remarkably well considering the strength of the storm.

I think you will agree that the quality of finish is very good and the non combustible riser, all 66 metres of it, now looks very smart.

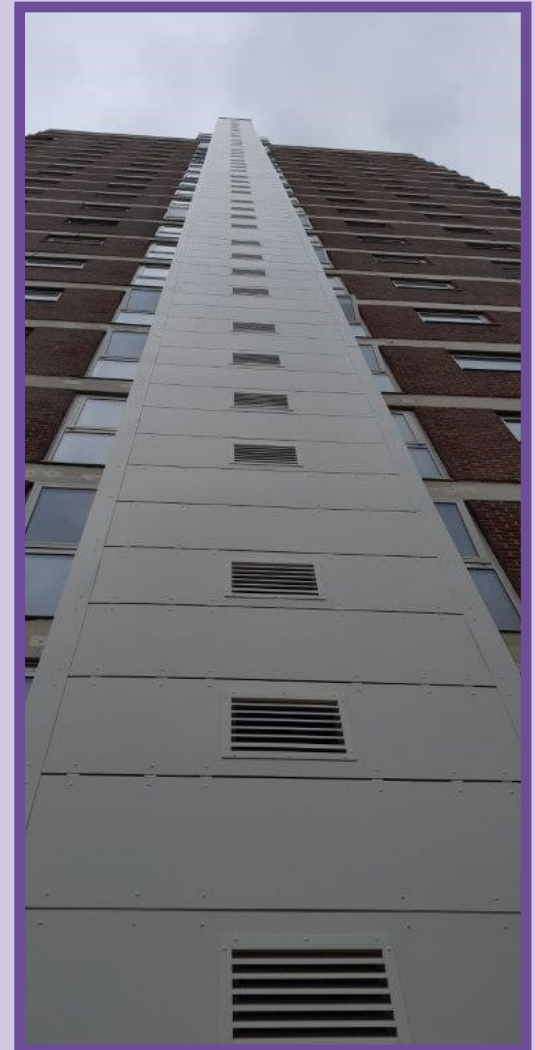
The structural load bearing steels have been painted with an Intumescent coating to provide a passive fire protection. (An intumescent coating is basically a paint-like material which is inert at low temperatures – under 200 °C, but reacts with heat. As the temperature rises, during a fire event, the intumescent coating swells and forms a char layer that covers the steel.

There is some remaining, making good to the podium and wall, where the temporary steels were situated to the rear of the building. We are currently completing this.

You may be interested to know that we used over 1000 metres square of cladding insulation and cement board in the process, including 1000 metres of insulation to the riser pipes!

Automatic Opening Vents (AOV) were successfully relocated to the communal areas of the building. An AOV system is a control system that clears smoke for people leaving the building and vents smoke out of the area that has been triggered.

There were also a small number of flats that we had to install sprinklers. These have now completed.



### From the United Living Team:

We would all like to thank you  
for your patience and  
cooperation while carrying out  
these works.